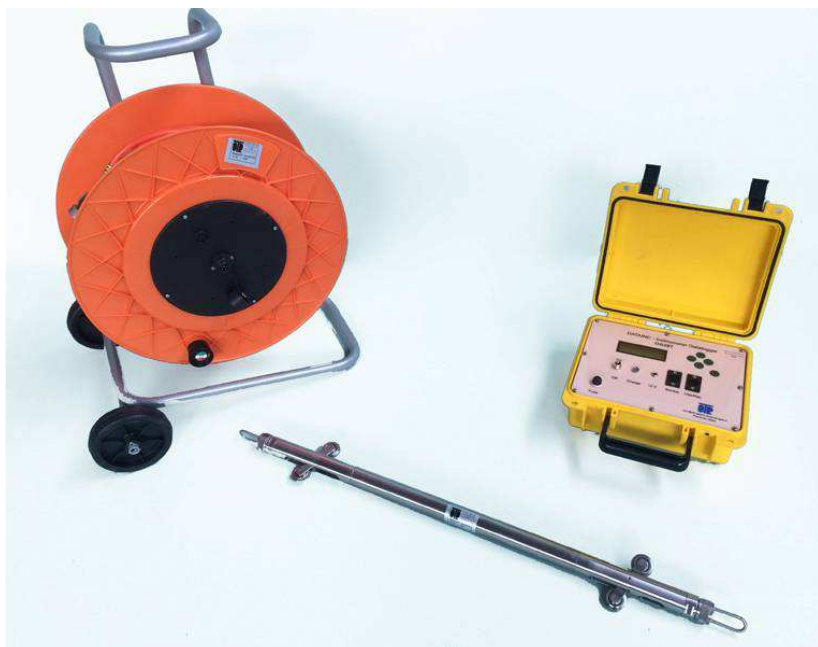


Horizontal Inclinometer probe OG310H



Areas of application

The system consists of an horizontal inclinometer probe with double connectors, operating cable and datalogger. The system is used wherever necessary to detect subsidence detected and under tanks.

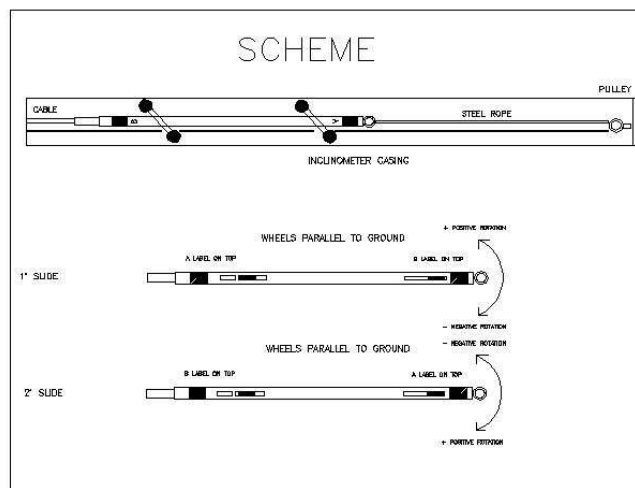
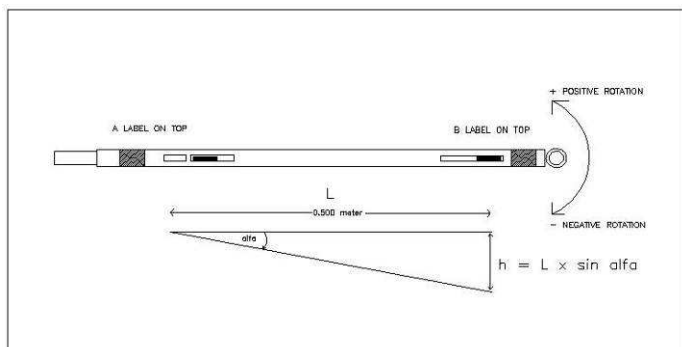
In particular it finds application in:

- Monitoring of road and rail embankments
- Monitoring of the weaknesses of the tanks of all kinds
- Control of subsidence in Dams

Technical features

The probe is equipped with an inclinometer Horizontal MEMS sensor uniaxial high precision. The probe has a connector on both sides to permit reading and straight down from a single inlet. The probe is equipped with arms breakable fastening for easy retrieval in the event of a draw. The datalogger allows measurements quickly and confidently.

Utilization




OTR srl
Organizzazione Tecnici Riuniti

Via Btg. Susa, 36 – 29122 Piacenza
Tel: +39 0523 594290 – Fax: +39 0523 607512
info@otr-geo.it – www.otr-geo.it – P.IVA/CF 00894610153



Technical specifications

Horizontal Inclinometer probe OG310H	
Code	OINCLI00002
Principle of functioning	MEMS
Range	+/-14.5° o +/- 30°
Power supply	+/-12 Vdc
Output	+/-5.0 Vdc su +/-14.5° o +/- 30°
Resolution	25.000 sinα o 20.000 sinα
No linearity	-+/- 0.057°
Full scale termal drift	0.013%/°C
Zero thermal drift	+/-0.002°/°C
Connector	Double with tin cap and ring
Probe	Stainless steel diameter 30 mm Compatible with inner tubes φ 45 to 75 mm
Whell base	50 cm o 24"
Carrying whells	Detachable wheel carriages (650 N pull)
Weigth	2.20 Kg
The probe is equipped with a double connector to military standards MIL C26482 on both sides.	

Inclinometer cable with storage reel	
Code OINCLI200XX0	
	<ul style="list-style-type: none"> • Polyuerthane sheath • Color: orange • Stainless steel anti-torsion sheath. Built in 2.5 mm steel rope • Tinned copper 6x0.50 mm² conductors • Tinned copper crimped graduations every 50 cm, with metres reading every 10 graduations • Connection with positioning rods • Strength ~ 600 Kg • Storage reel diameter: 40 cm

Datalogger	
Code OINCLI40000	
	<ul style="list-style-type: none"> • Microprocessor: 24FJ • 64 Kbyte memory dedicated to operative system, 256Kb memory for recording up to 30 measurements for 4 slides, each up to 500 steps (50cm steps in a 250 m) • RTC internal • Backlight LCD display 4x20 • USB data output • Keyboard: 5 multifunctional keys • External button for data acquisition • External battery charger • Autonomy > 12 h • ABS container, size: 28x26x12 cm • Battery: 6V 4 or 6 A/h • Weight: 3.4 Kg • OTR driver for WIN 2000/XP/Vista/7

Accessories			
	Code OINCLI90001		Code OINCLRINV75
Positioning rods Φ 10 mm, length 2 meters with quick connector		Tail sheave and pulley	